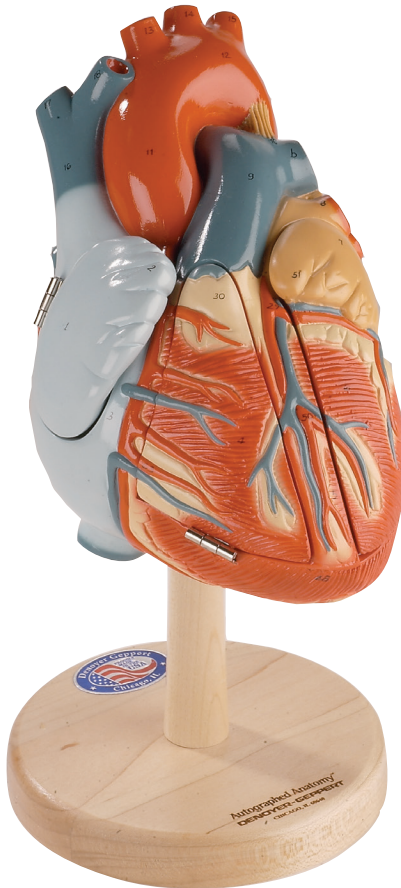




Heart of America

Numerical Identification Key for Model 0140-00



denoyer.com

Key to Life-size Heart

1. Right atrium
2. Right auricle
3. Coronary sulcus
4. Right ventricle
5. Anterior interventricular sulcus
6. Left ventricle
7. Left atrium
8. Pulmonary veins
9. Pulmonary trunk
 - a. Right branch of pulmonary artery
 - b. Left branch of pulmonary artery
10. Ligamentum arteriosum
(remnant of ductus arteriosus)
11. Ascending aorta
12. Aortic arch
13. Brachiocephalic trunk
14. Left common carotid artery
15. Left subclavian artery
16. Superior vena cava
17. Right brachiocephalic vein
18. Left brachiocephalic vein
19. Descending aorta
20. Esophagus
21. Trachea
22. Annular ligament
23. Tracheal cartilages
24. Left bronchus
25. Right bronchus
26. Inferior vena cava
27. Coronary sinus
28. Great cardiac vein
29. Left coronary artery
30. Fatty tissue
31. Right coronary artery
32. Sinoatrial node
33. Orifice of inferior vena cava
34. Valve of inferior vena cava
35. Tricuspid valve
36. Atrioventricular node
37. Pulmonary valve
(*Semilunar valve of pulmonary artery*)
38. Right branch of Bundle of His
39. Purkinje fibers
40. Chordae tendineae
41. Bicuspid (*mitral*) valve
42. Papillary muscles
43. Left branch of Bundle of His
44. Interventricular septum
45. Aortic valve (*semilunar valve of aorta*)
46. Small cardiac vein
47. Posterior vein of left ventricle
48. Apex of heart
49. Circumflex branch of left coronary artery
50. Anterior interventricular branch of left coronary artery
51. Left auricle
52. Pectinate muscle
53. Crista terminalis
54. Posterior left ventricular branch
55. Fossa ovalis (*remnant of foramen ovale*)
56. Limbus of fossa ovalis
57. Valve of coronary sinus
58. Opening of coronary sinus
59. Azygous vein
60. Middle cardiac vein
61. Posterior interventricular branch
62. Trabeculae carneae
63. Marginal branches on right coronary artery



Autographed Anatomy

Molded and hand-painted in the United States by experienced artisans. Proudly autographed and dated to show that we stand by our products. The Autographed Anatomy™ product line carries a Lifetime Guarantee against manufacturing defects.

Care of Denoyer-Geppert Models

Your Denoyer-Geppert model was designed and manufactured to provide years of satisfactory service. Our models are molded of durable vinyl plastic. The finest lacquers and inks are used in the hand-painting and numbering of all our models.

In order to clean the model, you should wipe it with a damp cloth, or a cloth wet with mild soap solution, and wipe dry.

Avoid placing the model in direct sunlight for extended periods. A cloth cover or case will help keep the model clean.

Plastic covers not recommended